



## Mounthooly Independent Hostel



Sleeps 24

Mounthooly is at the head of the stunningly beautiful College Valley in North Northumberland just below the Hen Hole and Cheviot itself and is on the Pennine Way and St Cuthberts Way walking routes. The bunkhouse welcomes 24 guests to this wonderful location.

Here you will find:

- 20 beds in main building in three rooms; two 9-bed and one 2-bed.
- Family annex room, 4 beds, shower en-suite, microwave and kettle.
- Clean bedding is provided (duvets, pillows and sheets included)
- Communal lounge and fully kitted kitchen with appliances and utensils/crockery
- Fast, unlimited Wi-Fi

Enquiries or to book, contact:

Charlene Drysdale

Mounthooly Bungalow, College Valley, Kirknewton, Wooler, NE71 6TU

Tel: 01668 216 210

E-mail: [Mounthooly@college-valley.co.uk](mailto:Mounthooly@college-valley.co.uk)

[www.college-valley.co.uk](http://www.college-valley.co.uk)

[Find us on facebook](#)

## Contents

Communal Living Area.....	Page 1
Bedrooms.....	Page 2
What is provided.....	Page 3
Parking and dogs.....	Page 4
Prices.....	Page 5
Plan of bunkhouse.....	Page 6
Location .....	Page 7
About College Valley.....	Page 8
Directions.....	Page 9



## The Communal Living Area

In the main building, there is a communal open plan kitchen living area. The lounge is furnished with comfy sofas and you will find a log burning stove for those cosy winter nights (logs supplied). The kitchen is fully equipped with fridge/freezer, large electric cooker/hob, microwave and crockery/utensils.

**Self-catering only.**





## The Bedrooms



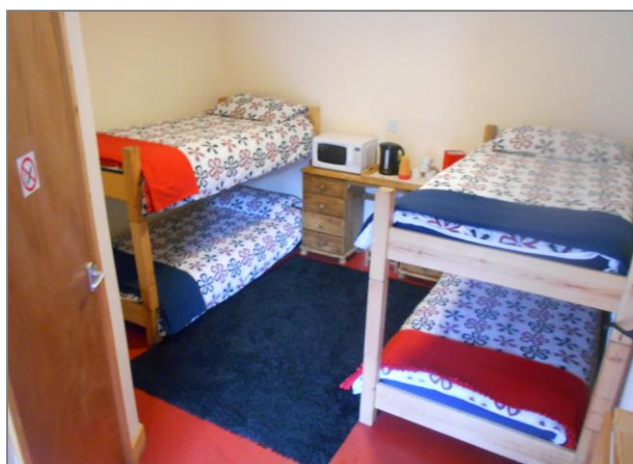
9-bed room upstairs in main bunkhouse



2-bed room upstairs in main bunkhouse



9-bed room downstairs in main bunkhouse



The Family annex sleeps four. It has an en-suite with shower, microwave and kettle provided for room only.

### Other Facilities

In addition to the bedrooms and living area, there are:

- Two shower rooms with toilets and hot water.
- Utility Belfast sink.
- Laundry room with washing machine and tumble drier that can be used with permission
- Electric panel heaters and log fire (logs supplied).
- Board Games
- Undercover cycle storage
- Barbeque (need to bring own charcoal).
- Fast, unlimited Wi-Fi

### What is provided?

- Bedding is provided for you, this includes a pillow and pillowcase, single fitted sheet and duvet and duvet cover for each bed. Beds are not made up on arrival.
- Standard First Aid Kit (no pain killers included)
- Logs for the fire
- Matches
- Anti-bacterial spray
- Washing up liquid
- Dishcloths/sponge scourers\*
- Handsoap
- Teatowels \*

### Suggestions of what to bring (not provided)

- Toilet Rolls \*
- Towels
- Personal toiletries
- Kitchen roll
- Bin bags
- Food and drink (see page 4)
- Cling film/kitchen foil/sandwich bags/tupperware boxes
- Medicines
- Washing detergent
- Torch
- Firelighters
- Iron
- Camera/phone charger

\* We provide a limited amount of these for walkers, but please bring them if you are travelling by car or there is a few in your party. Toilet rolls is not something you can manage without!!!

### **Self-Catering:**

There is no catering at Mounthooly, so you will need to bring your own food and drinks. The nearest location for food and basic shopping is Wooler, which is a twenty-minute drive with local food available at the butchers, bakers and Good Life shop. There is a Co-op and Farm to Freeze which are small supermarkets/village shops. The nearest large supermarket is either Alnwick or Berwick both are roughly one hour's drive away. Sainsburys, Tesco and Asda do home deliveries to the area.

Good places to eat locally are Milan in Wooler (an Italian restaurant), No.1 (tapas bar in Wooler), The Red Lion pub at Milfield and The Collingwood Arms, Cornhill. I would advise booking as they are popular.

### **Outside Area**

The hostel is surrounded by greenery, hills and trees and there is a grassed area directly outside the bunkhouse with picnic tables.



### **Parking and Access**

There is limited parking at the bunkhouse. Vehicle permits are usually required to access the private road beyond Hethpool, however these are provided with the booking and will be issued on arrival.

Due to its' remote location, the valley is subject to seasonal weather conditions (snow and ice) and it is occasionally impossible to get safe access. The Estate are conscious of this and endeavour to clear the road as soon as possible of any blockages.

During lambing season (spring) the gates are mostly closed (these must be manually opened).

### **Dogs**

Well behaved dogs are welcome with prior permission. Dogs need to be kept under control and on leads where livestock is present. Please pick up after them around the bunkhouse.



### **Prices per night**

Property	No of beds	Cost Per Night
Main bunkhouse	20	£18 per adult per bed £15 concession per bed (registered charities, students & U18's)
Family Room	4	£68
Whole bunkhouse This is the main bunkhouse and family room (exclusive use).	24	£300 £250 for registered charities and schools

### **How to book and pay**

#### **To book the whole bunkhouse**

Please book via AirBNB.

The full amount is payable upon booking.

#### **To book individual beds or the family annex**

Please e-mail [Mounthooly@college-valley.co.uk](mailto:Mounthooly@college-valley.co.uk) with your preference of dates to check availability.

A booking form will then be e-mailed to you for you to complete.

Once returned, you will be e-mailed an invoice and be able to pay by bank transfer or Paypal.

The full amount is payable upon booking.

#### **If you have to cancel your visit to us.....**

Free cancellation for 48 hours, as long as the guest cancels at least 14 days before check-in. After that, guests can cancel up to 7 days before check-in and get a 50% refund.

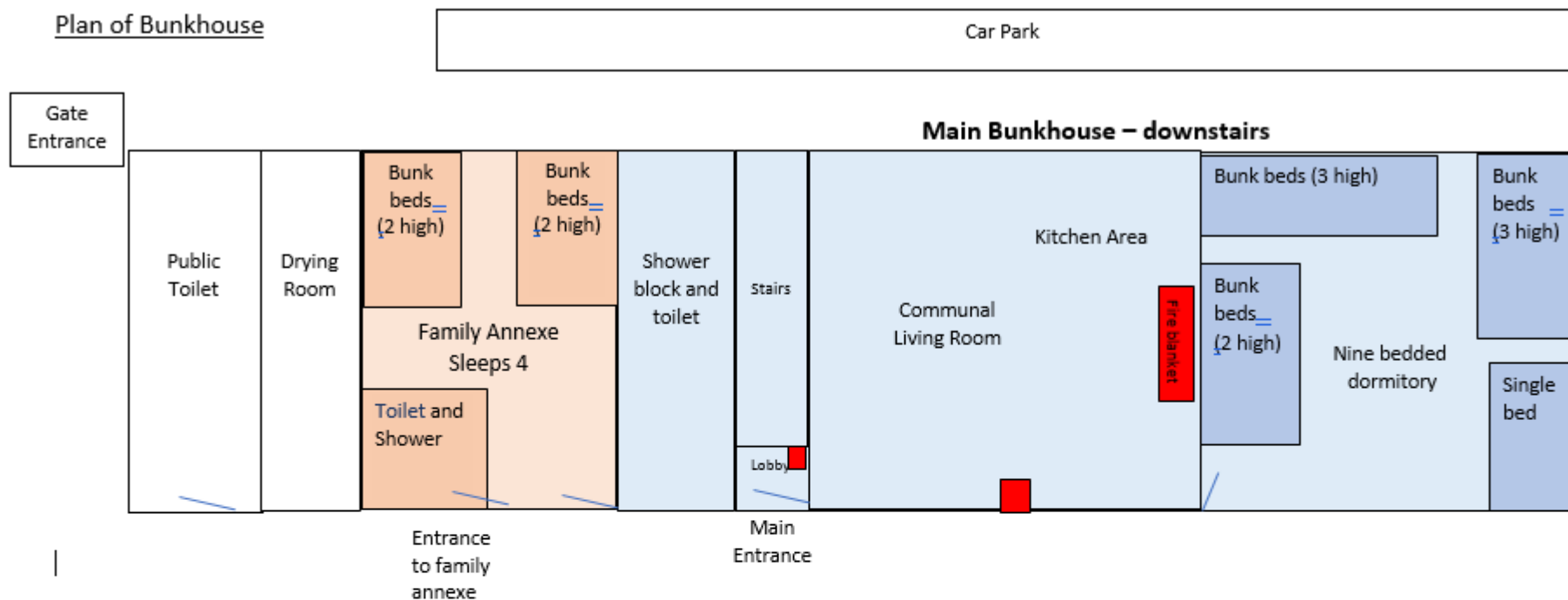
#### **Cancellation policy**

- Full refund for cancellations made within 48 hours of booking, if the check-in date is at least 14 days away.
- 50% refund for cancellations made at least 7 days before check-in.
- No refunds for cancellations made within 7 days of check-in, or guests that decide to leave early.

**We strongly advise you to take out cancellation insurance.**



## Plan of Bunkhouse

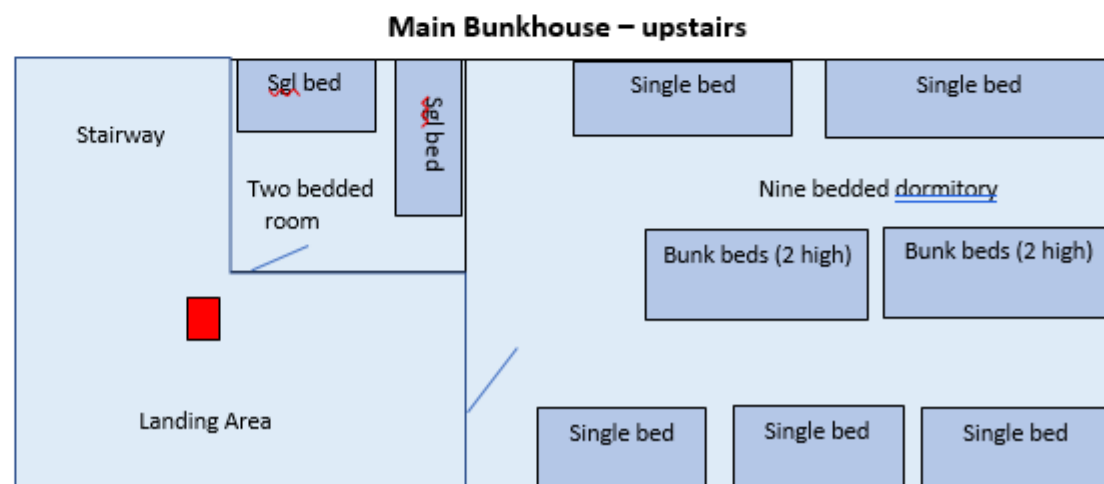


### Key

- Family annexe (private)
- Communal areas
- Fire extinguishers

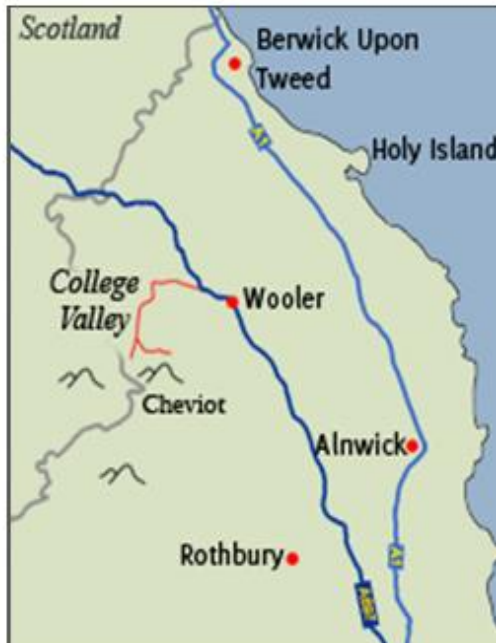
NB: THIS PLAN IS **NOT** TO SCALE.

IT IS JUST TO GIVE AN IDEA OF WHERE THE BEDS ARE.



## Location and about College Valley

College Valley is in the Northumberland National Park. This special place is an oasis of peace and tranquillity with fabulous scenery. Vehicle access is restricted and there is nothing to spoil the enjoyment of what must be the quietest place in Northumberland. What better way to get away from the stresses and strains of modern life?



### Location:

North Northumberland, on the border between England and Scotland.

1-mile to the bottom of Cheviot and the Hen Hole.  
13 miles from Wooller so although it feels remote is relatively near civilisation!

**Map Coordinates: GR 882, 225 Ordnance Survey**

Mounthooly postcode NE71 6TU





The setting is perfect to explore the remote hills which you can walk all day, often without meeting another soul. The night here in the valley is dark, the only light comes from the moon and the stars. Northumberland National Park Authority, Kielder Water & Forest Park Development Trust and Kielder Observatory Astronomical Society were awarded the title of Northumberland Dark Sky Park in December 2013, making Northumberland, Europe's largest Dark Sky Park.



Recognition of the unique landscape is shown by its' designation as an Area of Outstanding Natural Beauty and Site of Special Scientific Interest. There is an abundance of wildlife—wild goats, deer, otter, peregrine, grouse, to name a few. If you are quiet, you may be lucky enough to see one of our most charming residents, the red squirrel.



Throughout all seasons the valley offers wonders to be found, be it our local wildlife, archaeology, plant life, viewpoints, history, or the amazing effect nature has on the land, from waterfalls to sparking icicles.

This is the perfect wild get away from it all; once seen never forgotten.

College Valley is managed by College Valley Estate Ltd

## Directions

### How to get to College Valley

Postcode for Sat Nav – **NE71 6TU**

#### From North

- Take the A697 South to Coldstream.
- Drive through Coldstream and Cornhill (village about 4 miles after Coldstream) and take a right turn at the roundabout continuing up the A697.
- Drive approx 10 miles (you will pass the Bluebell Inn on your way).
- Turn right off the A697, signposted Howtel (B6352)
- Follow that road for approx 3.5 miles and take a left turn for Kilham
- Go over the bridge and turn left at the T-junction for Kirknewton/Wooler (B6351).
- Follow that road for approx 2.5 miles and take a right turn when you get to a sign saying Hethpool.
- Follow the instructions at the bottom of the page 'directions to Mounthooly'

#### From Berwick

- Take the A6354, drive past Etal and turn right over Ford bridge.
- At the T-junction take a left turn onto the A697.
- Drive approx 0.5 miles and turn right off the A697, signposted Howtel (B6352)
- Follow that road for approx 3.5 miles and take a left turn for Kilham
- Go over the bridge and turn left at the T-junction for Kirknewton/Wooler (B6351).
- Follow that road for approx 2.5 miles and take a right turn when you get to a sign saying Hethpool.
- Follow the instructions at the bottom of the page 'directions to Mounthooly'

#### From the South

- Head for Morpeth on the A1.
- About 4 miles after the Morpeth turn-off, take the slip-road off the A1 onto A697 for Coldstream/Rothbury/Longhorsely/Wooler.
- Follow the A697 for approximately 50 miles.
- Drive through Wooler and continue on the A697 until you see 4 big flag poles (about 2 miles past Wooler), take a left turn here, signposted Kirknewton.
- Drive through Kirknewton and over a small hump-backed bridge.
- Just after this, take a left turn signposted Hethpool.
- Follow the instructions below 'directions to Mounthooly'

### Directions to Mounthooly

From here, you stay on this road all the way to Mounthooly. Don't go over the cattle grid at the wagon turning area; follow the road which bares left. Continue past the cottages at Hethpool and ignore the sign at the car park which tells you not to drive beyond this point. Continue along this private road. You will come to Cuddystone Hall, continue straight on up the hill for another 1.75 miles. Mounthooly signs are present at the hall and Fleehope.

This part of the journey will take about 20 minutes. Please take care when driving through the College Valley. The single-track roads have sharp bends and sudden drops and often have sheep roaming on them.